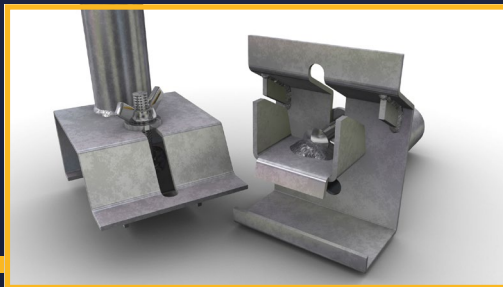
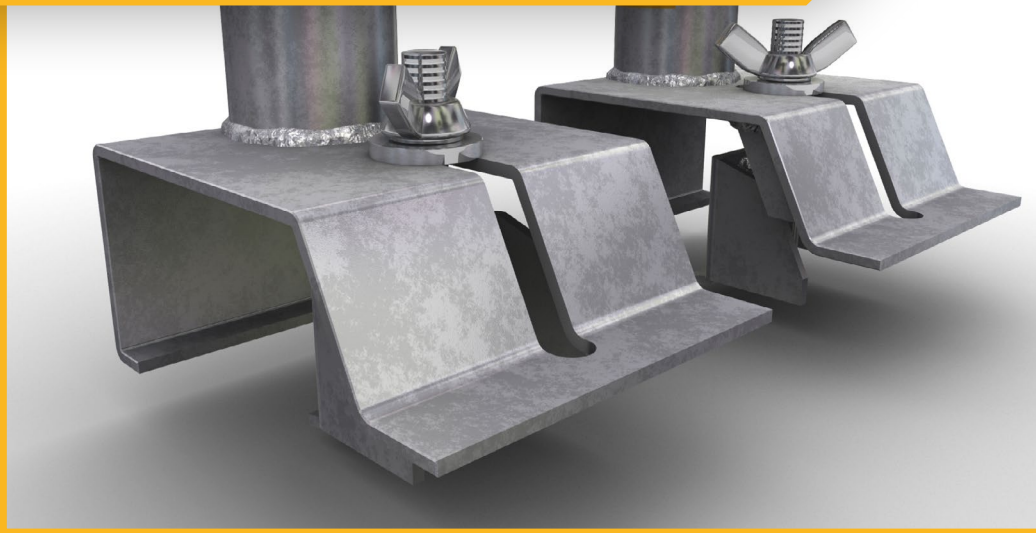


## Timber Beam Clamps



Product:	Code:	Weight:
Timber Primary Beam Clamp	000062	4kg
Timber Secondary Beam Clamp	000012	3kg

- ◆ K-lock safety system
- ◆ Compatible with European proprietary timber beam sections
- ◆ Mechanical Clamp
- ◆ Speedy Wing Nut locking device
- ◆ Unique profiled wedge section locking clamp