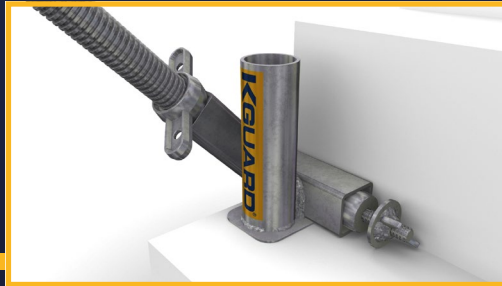


## Staircase Clamp



Product:	Code:	Weight:
Staircase Clamp	000075	8.5kg

- ◆ K-lock safety system
- ◆ Developed as an alternative fixing to the socket base
- ◆ Suits any staircase profile, in-situ, pre-cast or steel
- ◆ Mechanical Clamp
- ◆ Interchangeable with flexible adjustment